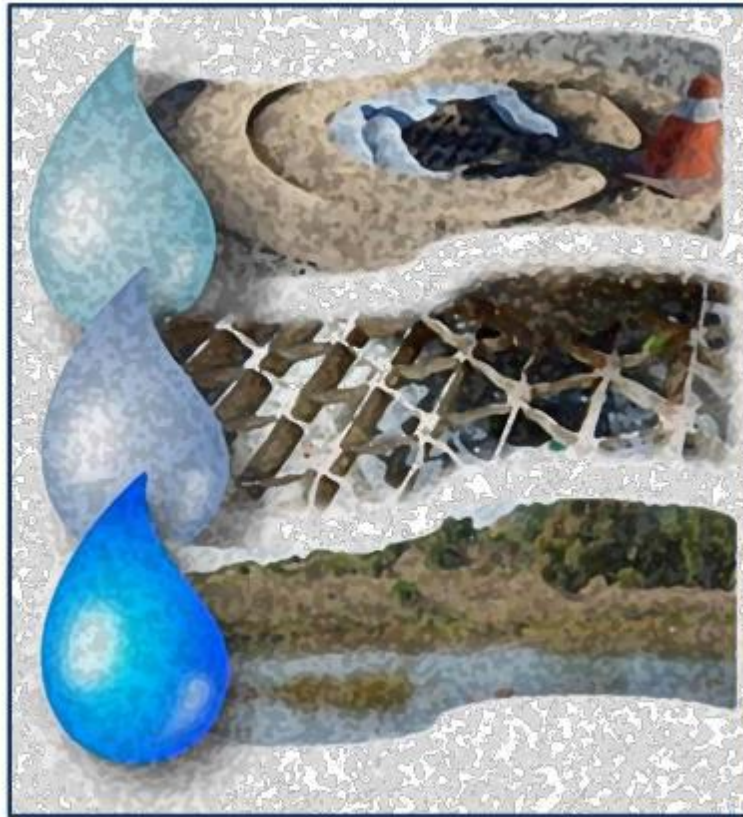


STATEWIDE INDUSTRIAL GENERAL PERMIT  
DISCHARGER'S GUIDE TO THE IMPAIRED WATERBODY AND  
TOTAL MAXIMUM DAILY LOAD MAP TOOL

# TMDL MAPPING TOOL

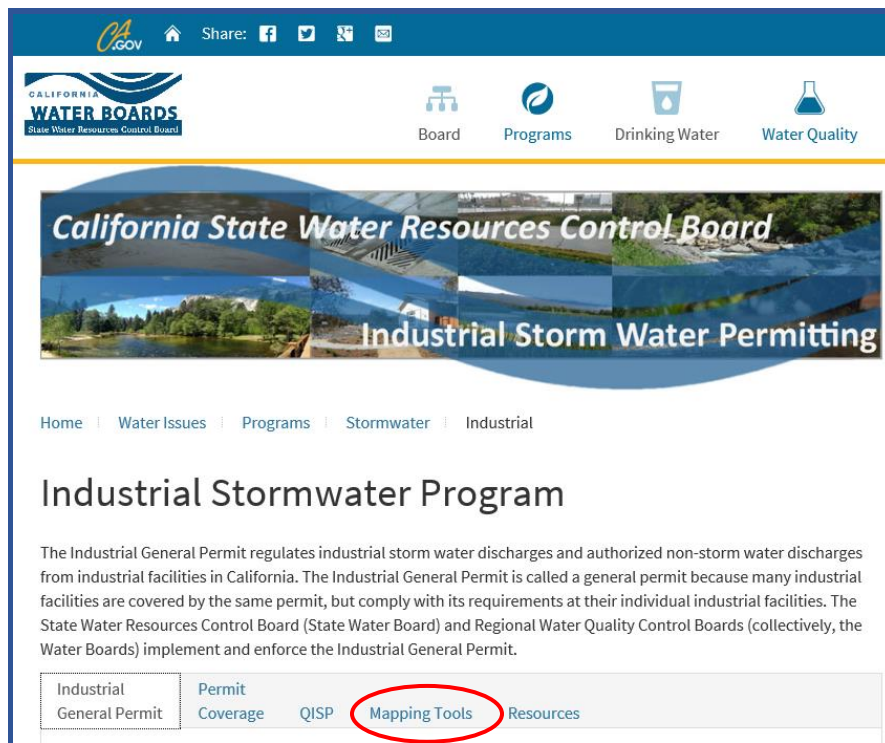


### Locating the Mapping Tool:

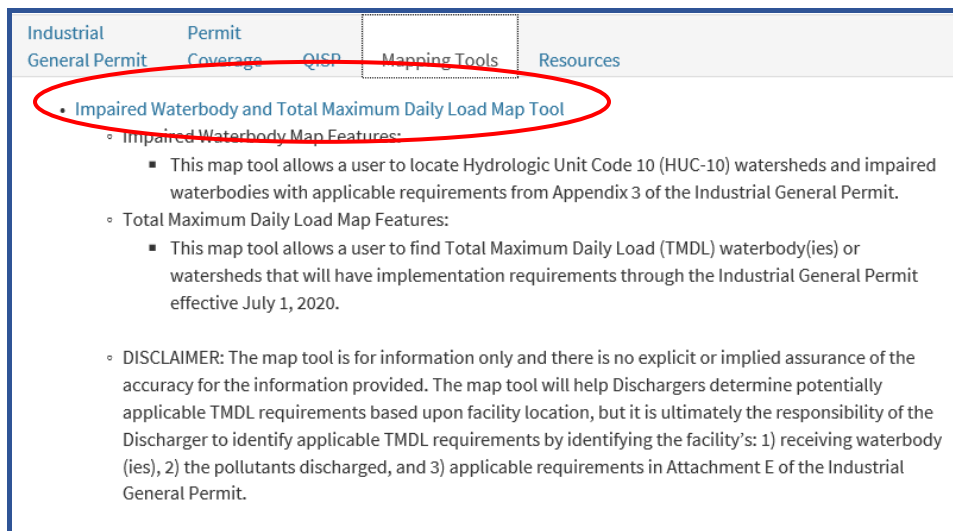
The mapping tool is located on the State Water Resources Control Board Website, under the Industrial Stormwater Program page.

1. Click on the mapping tool tab located at the following address:

[https://www.waterboards.ca.gov/water\\_issues/programs/stormwater/industrial.html](https://www.waterboards.ca.gov/water_issues/programs/stormwater/industrial.html)



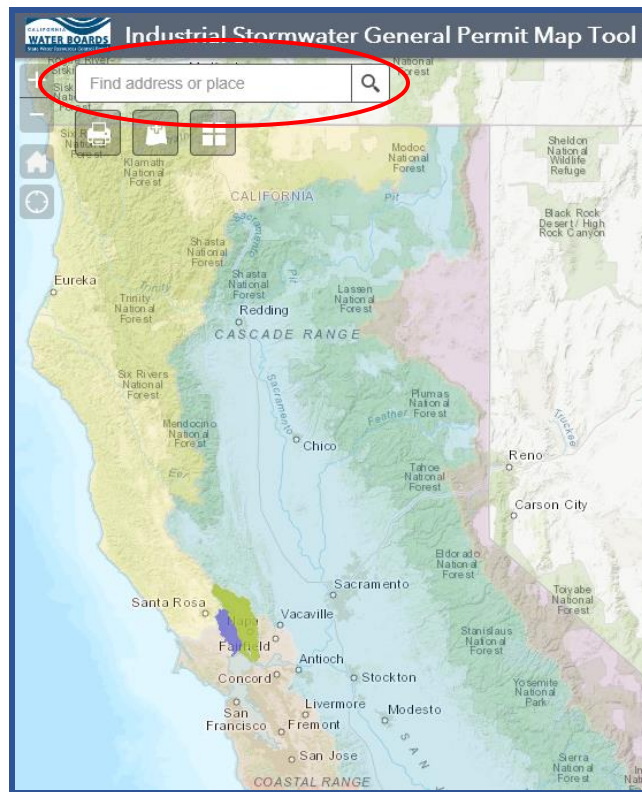
2. Under the Mapping Tool Tab click on the Impaired Waterbody and Total Maximum Daily Load Map Tool link.



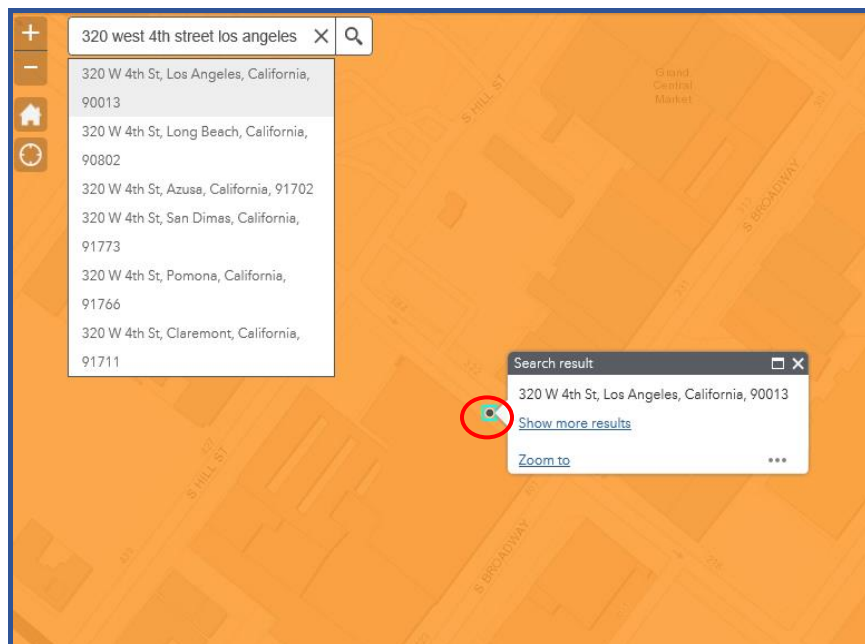
## TMDL Mapping Tool – Region 4

Last Revision: 5/13/18

- Once you have opened the Industrial Stormwater General Permit Map Tool you can up enter in the address of your facility in the Text Search Bar and click on the Magnifying Glass search symbol.



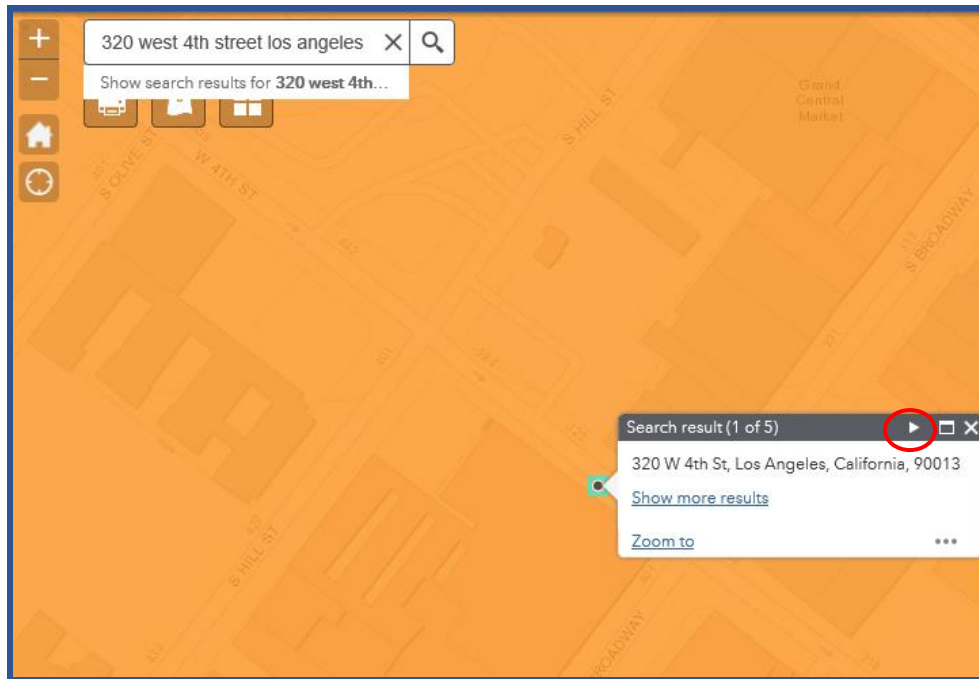
- The map will zoom in on the closest search result, if this is the correct address click on the search result on the map. If this is not the correct facility select the correct address from the search results.



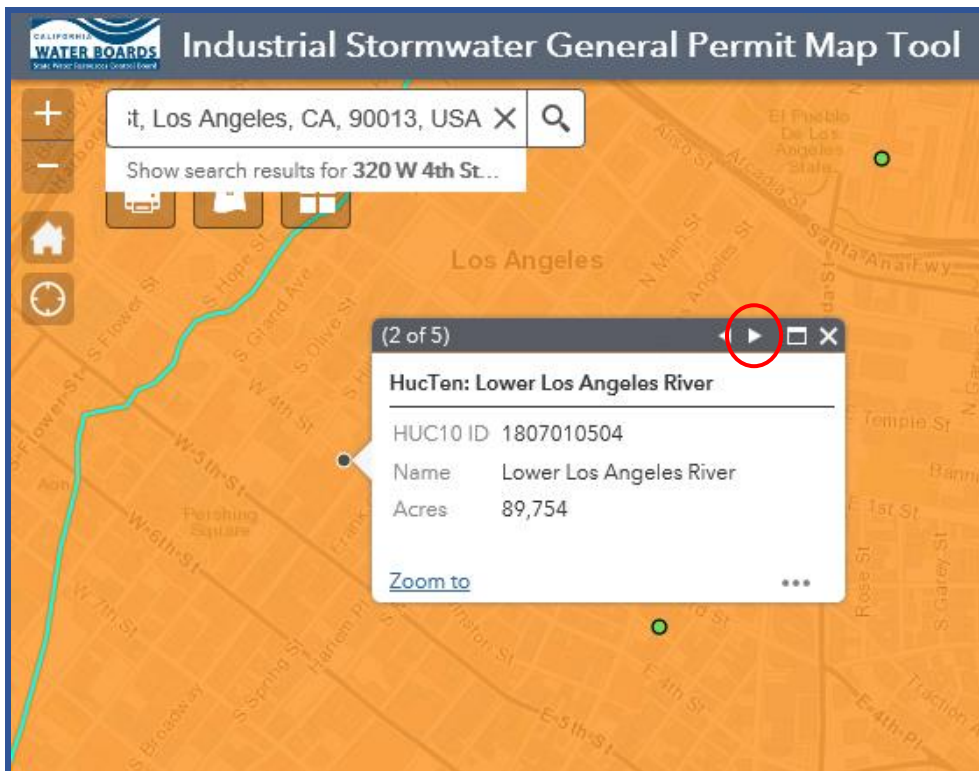
# TMDL Mapping Tool – Region 4

Last Revision: 5/13/18

- Once you click on the correct search result you can click on the next arrow (circled in red in the picture below) to cycle through the watershed the facility is in and what TMDLs may apply to your facility.



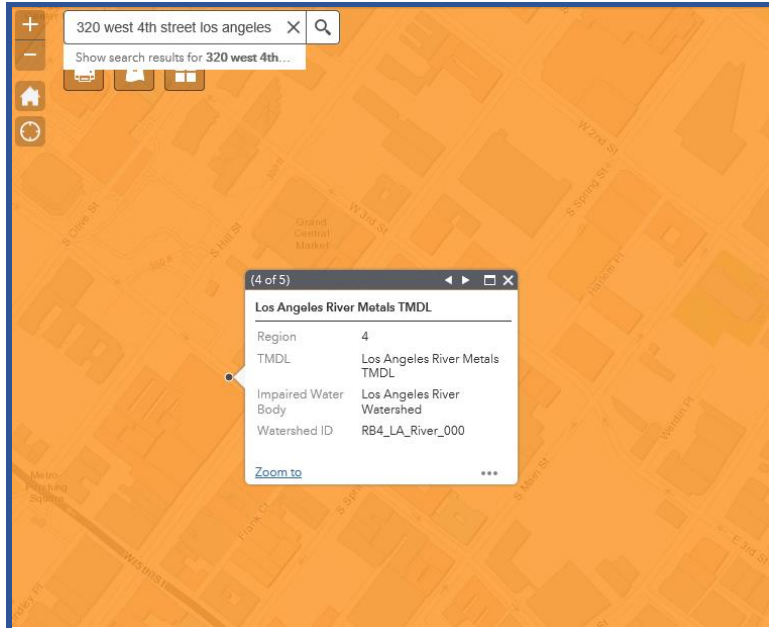
- The first tab shown is the watershed the facility is located in. To get a list of what TMDLs may apply your facility again click on the next arrow.





TMDL Mapping Tool – Region 4  
Last Revision: 5/13/18

7. The first TMDL that may apply to the facility will be shown, to continue viewing TMDLs that may apply for your facility again click on the next arrow.



Once you know all the TMDLs that may apply to your facility you can view the requirements listed for the TMDLs in the Industrial General Permit, Attachment E.

8. Now that you know which TMDLs apply to your facility you can look up the specific requirements in the Industrial General Permit, Attachment E.

EXAMPLE:

Los Angeles River Metals TMDL (cont.)	Los Angeles River or Los Angeles River Tributaries (cont.)	Zinc	Total Zinc Instantaneous Maximum NEL of 0.159 mg/L	In addition to complying with this General Permit, Responsible Dischargers shall take QSE samples in accordance with Section XI.B and shall compare the results to the corresponding TMDL Numeric Effluent Limitations (NELs). Sample, collection, and reporting shall be conducted in accordance with Section XI.B.	July 1, 2020 <i>(Effective Date of these TMDL Requirements)</i>
Los Angeles River Metals TMDL	Los Angeles River or Los Angeles River Tributaries	Cadmium	Total Cadmium Instantaneous Maximum NEL of 0.0031 mg/L	(See Required Actions continued on the next page)	July 1, 2020 <i>(Effective Date of these TMDL Requirements)</i>
		Copper	Total Copper Instantaneous Maximum NEL of 0.06749 mg/L		
		Lead	Total Lead Instantaneous Maximum NEL of 0.094 mg/L		

Questions Regarding the TMDL Mapping Tool please contact Scott Landon at [Scott.Landon@waterboards.ca.gov](mailto:Scott.Landon@waterboards.ca.gov).